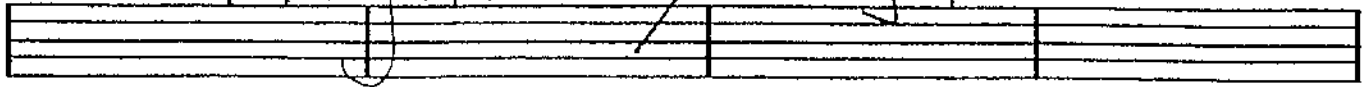


1/2 time  
Feel

# Night By Night



Horns

G/A

F(add9)  
A

Guitar  
+ Bass

Horns

Amin7

Guitar

Guitar  
+ Bass

Horns

Fmaj9

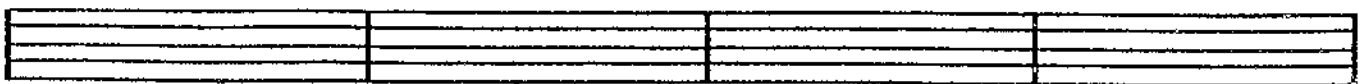
D(E-7)

G/D

F/D

C

Guitar  
+ Bass



RIGHT BY RIGHT

A \$  
Ami?

Handwritten musical notation for the first system, featuring two staves: **Guit. 1** and **Guit. 2 / BASS**. The notation includes chords and melodic lines.

Handwritten musical notation for the second system, featuring two staves: **Guit. 1** and **Guit. 2 / BASS**. Chord annotations above the staves include **Fmaj9**, **D**, **E-7**, **G<sup>7</sup>/D**, and **F#7/C**.

Horns 2nd x only Ami?

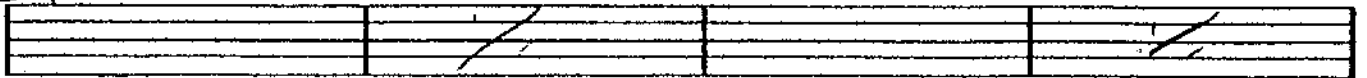
Handwritten musical notation for the third system, featuring three staves: **Horns**, **Guitar 1**, and **Guitar 2 / BASS**. The notation includes chords and melodic lines.

Handwritten musical notation for the fourth system, featuring three staves: **Horns**, **Guitar 1**, and **Guitar 2 / BASS**. Chord annotations above the staves include **Fmaj9** and **D**.

(End solo on D\$.)

B Dmi<sup>7</sup>

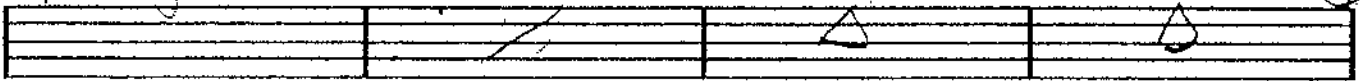
E<sup>mi</sup>7



Fmaj<sup>7</sup>

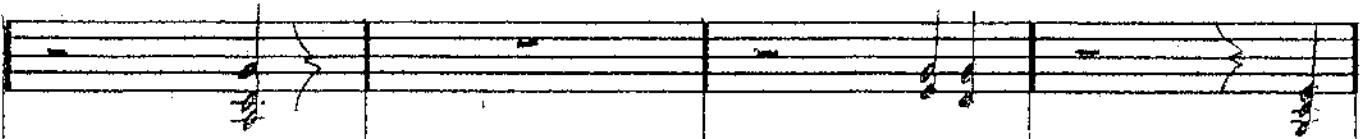
E<sup>mi</sup>7

Dmi<sup>7</sup>



11.

Guit 1



Guit 2  
Bass



Fmaj<sup>9</sup>

Fmaj<sup>7</sup>

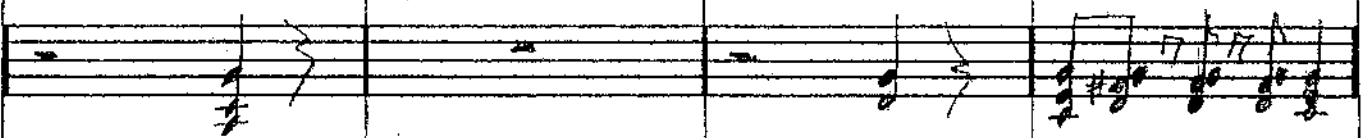
E7(b13 #9)

TO 1A

Horns



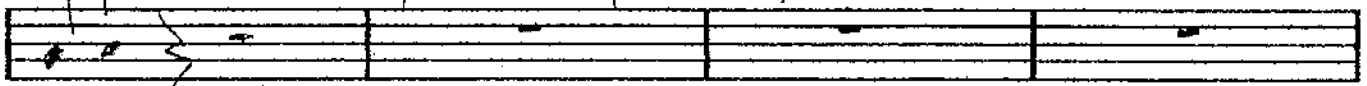
Guit 1



Guit 2



12. Ami<sup>7</sup> (Keyboard comp. 1/8 notes)



C G/A

F(add9)  
A

Horns



Guit.



D.S. <sup>sciter</sup> solo 9/10



Ami<sup>7</sup>

Git 1

Git 2 Bass

Fmaj<sup>9</sup>      Fmaj<sup>7</sup>      E<sup>7</sup> (#9)

Horns

Git 1

Git 2 Bass